

ARM036 Bath mixer

ARM036 Chrome

Article Number

ARM036 Chrome - 9426764
ARM036 Matte Black - 9426765
ARM036 Brass - 9426766
ARM036 Copper - 9426767
ARM036 Bronze - 9426768
ARM036 Black Chrome - 9426769
ARM036 Honey Gold - 9426770
ARM036 Brushed Black Chrome - 9426771
ARM036 Brushed Nickel - 9426772

Bath- and shower mixer, including handshower, flexible hose and metal bracket. To be combined with [T BOX 2.0 Small](#). →



Cleaning

Wipe the surface with a soft cloth and lukewarm water and possibly with soap solution. Avoid alkaline, acid-liming or abrasive cleaners.

Brass is a material that over time gets a beautiful patina but can be polished with brass polish. Copper also gets patina but should not be polished. The other shiny surfaces retain their luster.

Decalcification

Aerators and shower handles should be regularly decalcified by placing them in a vinegar bath for a couple of hours. Should limescale stains occur, use eucalyptus oil and a soft cloth.

Lubrication

Lubricate only with silicone grease.

Maintenance

Visit our [YouTube channel](#) → where there are instructional videos for changing the ceramic cartridge, changing aerators and more.

Specifications

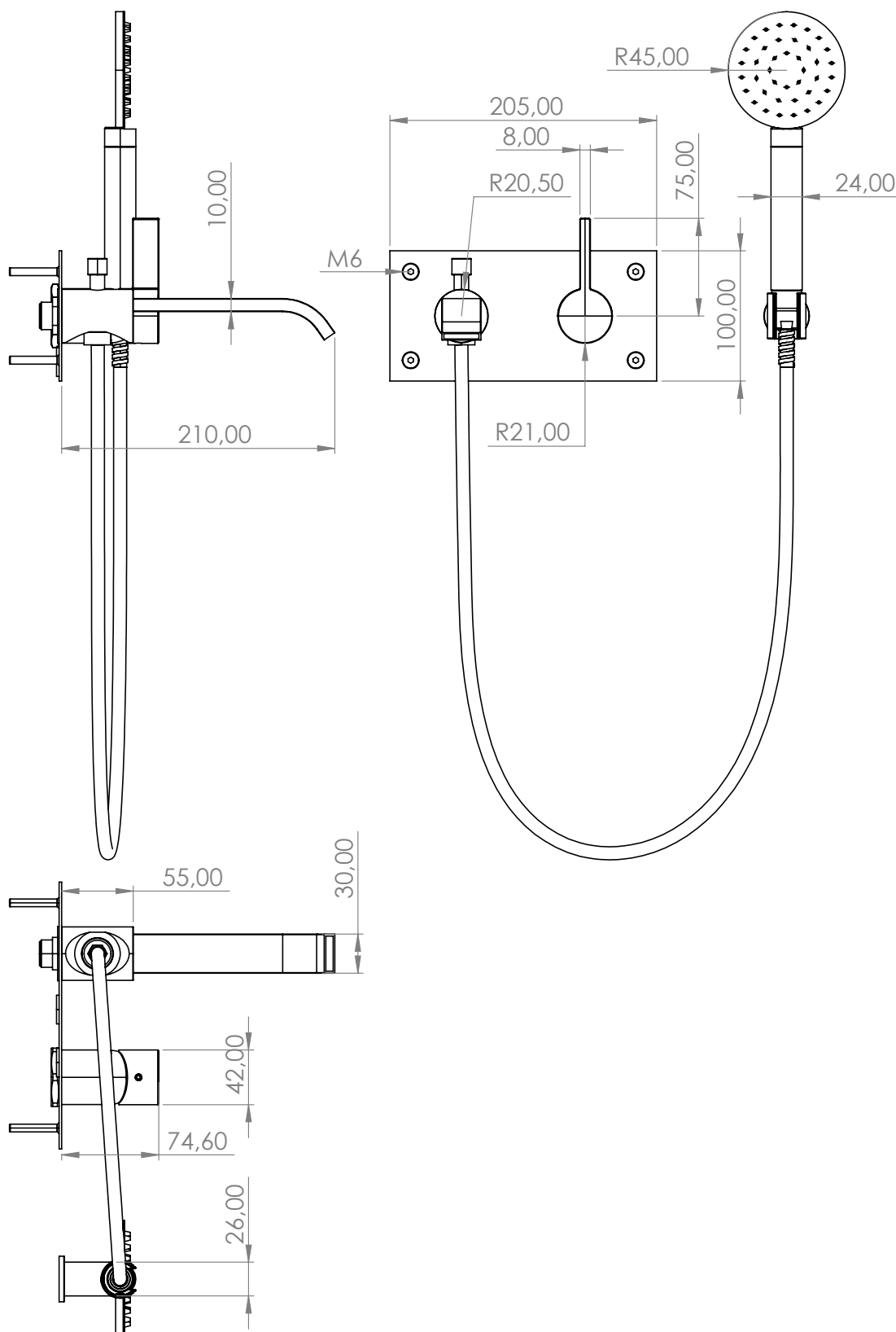
Number of outgoing connections - 1
Dimension inlet - 1/2"
Dimension outlet - 1/2 inch
Built in - Yes
Sound class - 1
Lift valve - No

Dimensions/Weight

Package - Depth - 167 mm
Package - Width - 205 mm
Package - Height - 100 mm
Package - Weight - 2,85 kg

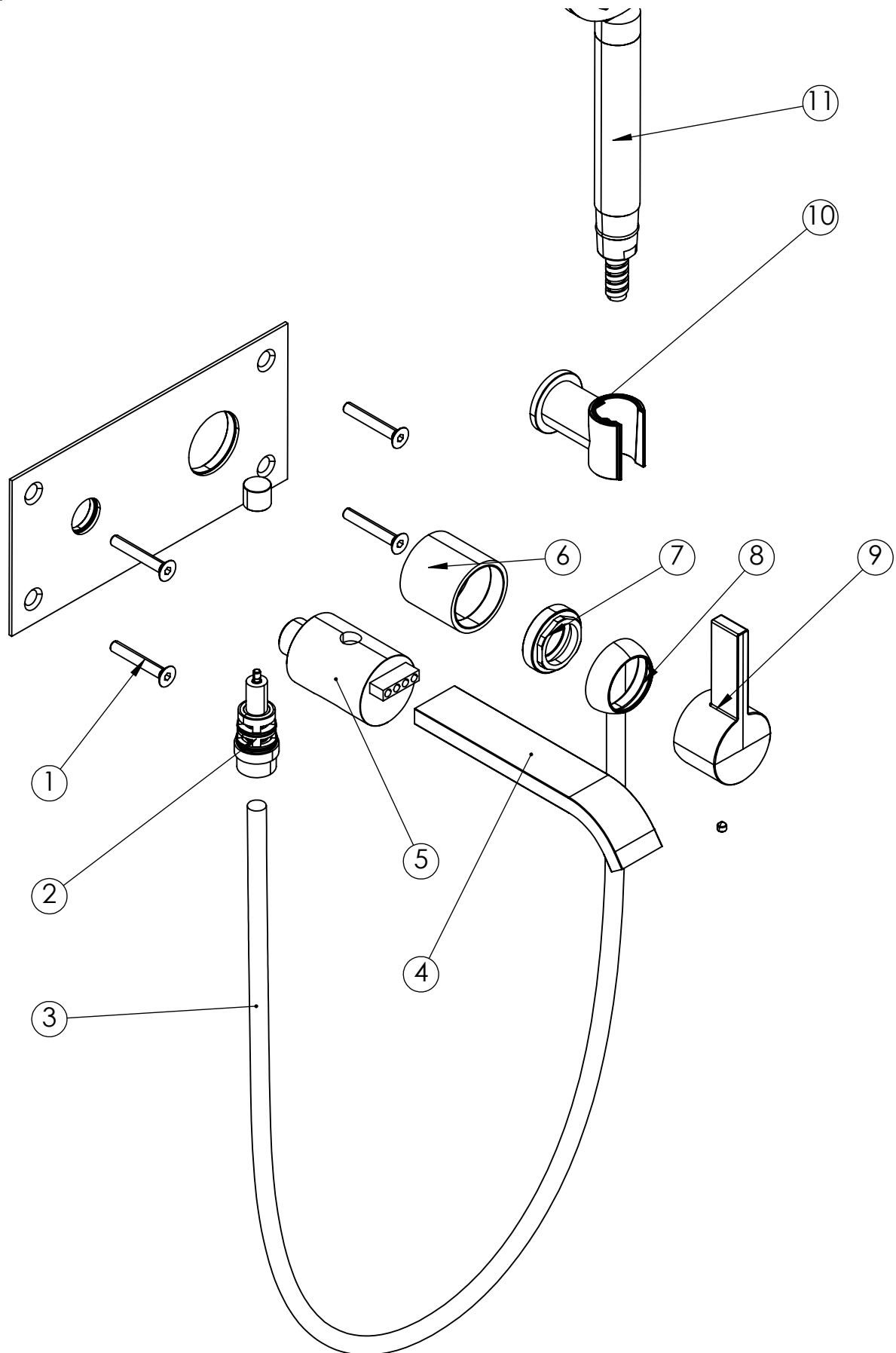
Tapwell

Drawing - PDF



Tapwell

Exploded View

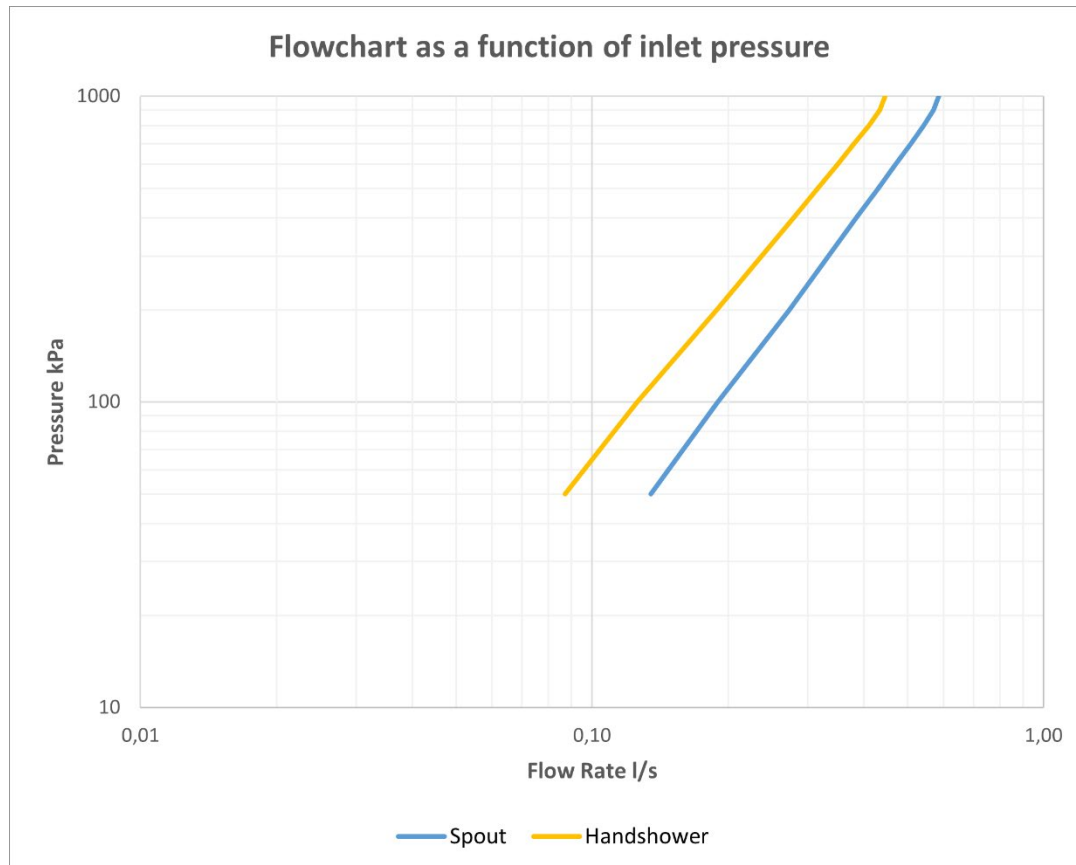


Tapwell

Pressure drop diagram

FLOWCHART

ARM036



DATA

Pressure (kPa)	Spout		Handshower	
	Flow lit/min	Flow lit/s	Flow lit/min	Flow lit/s
50	8,1	0,13	5,2	0,09
100	11,4	0,19	7,6	0,13
200	16,4	0,27	11,3	0,19
300	20,0	0,33	14,2	0,24
400	23,1	0,38	16,8	0,28
500	25,8	0,43	19,0	0,32
600	28,2	0,47	21,0	0,35
700	30,5	0,51	22,8	0,38
800	32,5	0,54	24,6	0,41
900	34,2	0,57	26,0	0,43
1000	35,1	0,59	26,7	0,45