

# Tapwell

## EVM071 Washbasin mixer

---

EVM071 Chrome

---

### Article Number

EVM071 Chrome - 4230082  
EVM071 Matte Black - 9424179  
EVM071 Polished Brass - 4229908  
EVM071 Copper - 4230607  
EVM071 Bronze - 9424353  
EVM071 Black Chrome - 4230631  
EVM071 Honey Gold - 4230627  
EVM071 Brushed Black Chrome - 9424354  
EVM071 Brushed Nickel - 9424178

---

Basin faucet with beautiful shapes. Suitable for medium and small wash basins. To be combined with [pop up waste 74400](#). →



Our wash basin taps combines advanced technology, exquisite design, and top-notch performance to offer you the ultimate bathroom upgrade. With its sleek and modern appearance, it effortlessly enhances the visual appeal of your wash basin, becoming a focal point that exudes elegance and sophistication in a range of different finishes.

# Tapwell

---

## Cleaning

Wipe the surface with a soft cloth and lukewarm water and possibly with soap solution. Avoid alkaline, acid-liming or abrasive cleaners.

Brass is a material that over time gets a beautiful patina but can be polished with brass polish. Copper also gets patina but should not be polished. The other shiny surfaces retain their luster.

## Decalcification

Aerators and shower handles should be regularly decalcified by placing them in a vinegar bath for a couple of hours. Should limescale stains occur, use eucalyptus oil and a soft cloth.

## Lubrication

Lubricate only with silicone grease.

## Maintenance

Visit our [YouTube channel](#) → where there are instructional videos for changing the ceramic cartridge, changing aerators and more.

---

## Specifications

**Connection inlet:** Flexible hose with 3/8" nut

**Number of grips:** One grip

**Number of outgoing connections:** 1

**Dimension inlet:** 10 mm alt. 3/8"

**Flow class:** S

**Length protrusion outlet head:** 108 mm

**Max flow:** 0,27

---

**Classification energy:** B

## Dimensions/Weight

**Package - Depth:** 340 mm

**Package - Width:** 320 mm

**Package - Height:** 90 mm

**Package - Weight:** 1,50 kg

**Package - Volume:** 0,01 m<sup>3</sup>

**Building height underneath outlet:** 70 mm

**Product - Width:** 45 mm

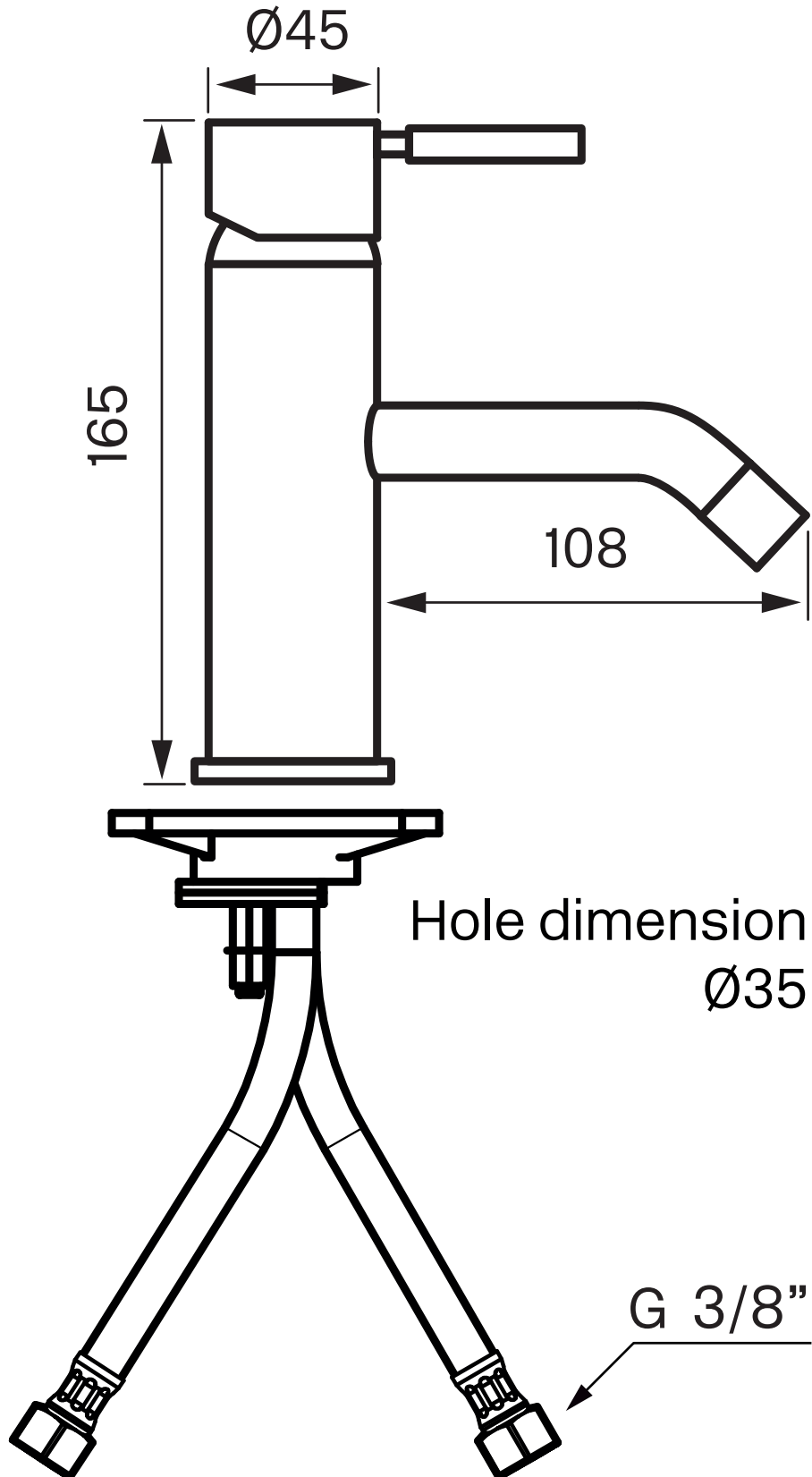
**Product - Depth:** 153 mm

**Product - Height:** 165 mm

**Total building height:** 165 mm

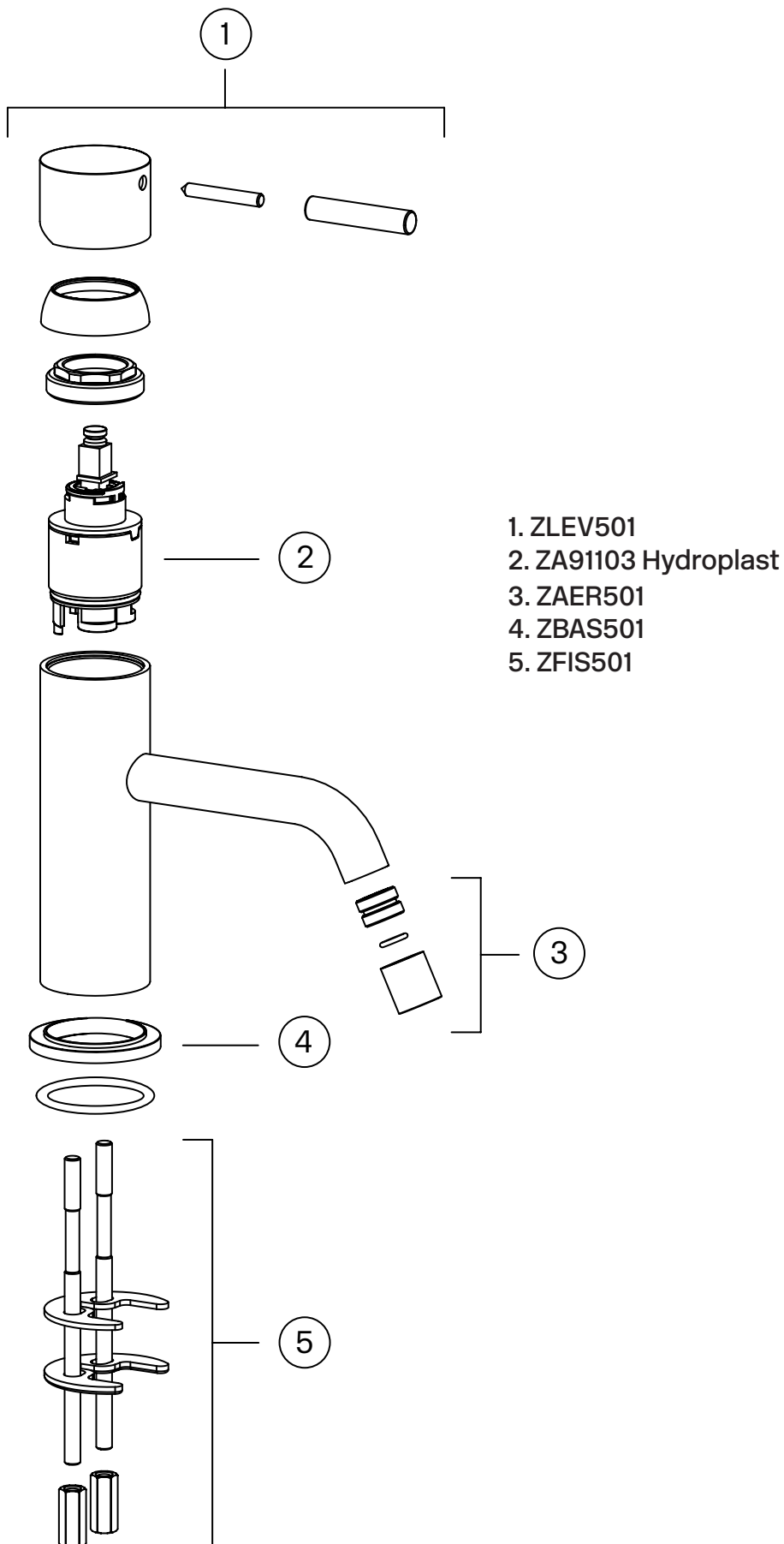
# Tapwell

Drawing - PDF



# Tapwell

## Exploded View

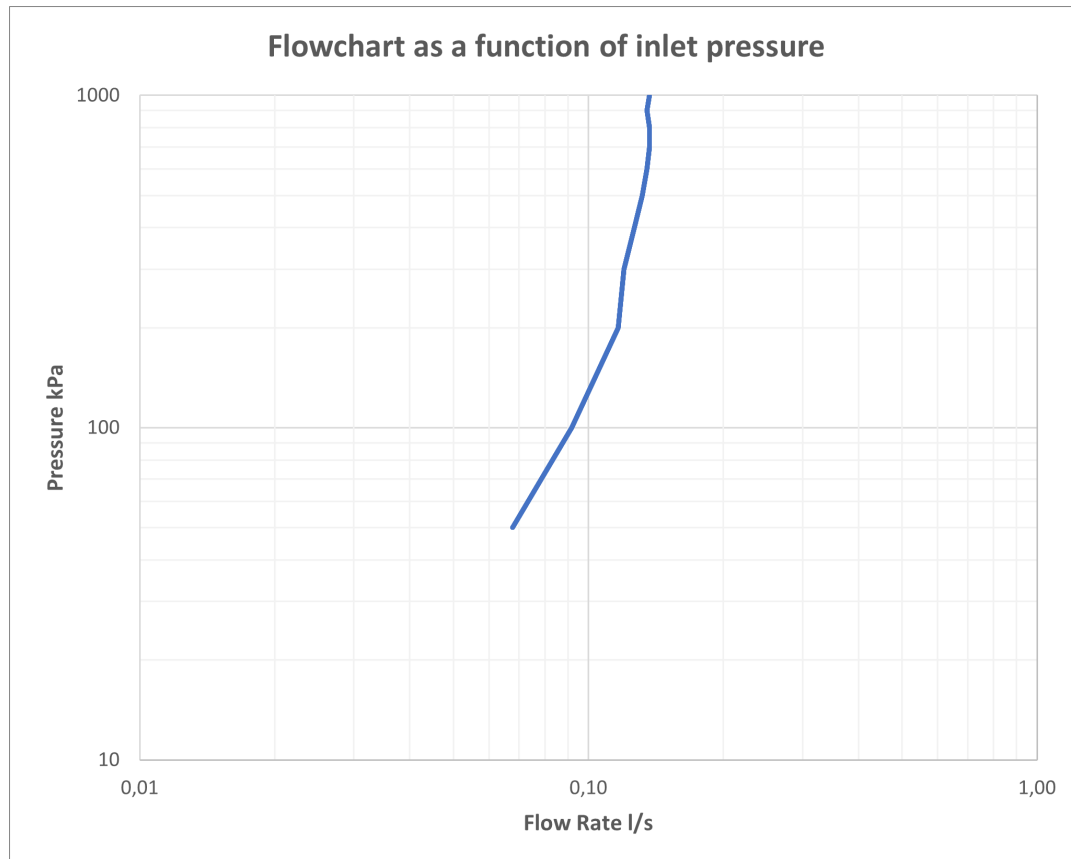


# Tapwell

## Flowcart

### FLOWCHART

EVM071



### DATA

Pressure (kPa)	Flow lit/min	Flow lit/s
50	4,1	0,07
100	5,5	0,09
200	7,0	0,12
300	7,2	0,12
400	7,6	0,13
500	7,9	0,13
600	8,1	0,14
700	8,2	0,14
800	8,2	0,14
900	8,1	0,14
1000	8,2	0,14