

TA242 Accessory

TA242 Chrome

Article Number

TA242 Chrome - 9419071
TA242 Matte Black - 9420505
TA242 Polished Brass - 9419072
TA242 Copper - 9420090
TA242 Bronze - 9425851
TA242 Black Chrome - 9419060
TA242 Honey Gold - 9419061
TA242 Brushed Black Chrome - 9422838
TA242 Brushed Nickel - 9421174
TA242 Ascot Grey - 9422839

Towel hook medium, 2 per pack.



Cleaning

Wipe the surface with a soft cloth and lukewarm water and possibly with soap solution. Avoid alkaline, acid-liming or abrasive cleaners.

Brass is a material that over time gets a beautiful patina but can be polished with brass polish. Copper also gets patina but should not be polished. The other shiny surfaces retain their luster.

Decalcification

Aerators and shower handles should be regularly decalcified by placing them in a vinegar bath for a couple of hours. Should limescale stains occur, use eucalyptus oil and a soft cloth.

Lubrication

Lubricate only with silicone grease.

Maintenance

Visit our [YouTube channel](#) → where there are instructional videos for changing the ceramic cartridge, changing aerators and more.

Dimensions/Weight

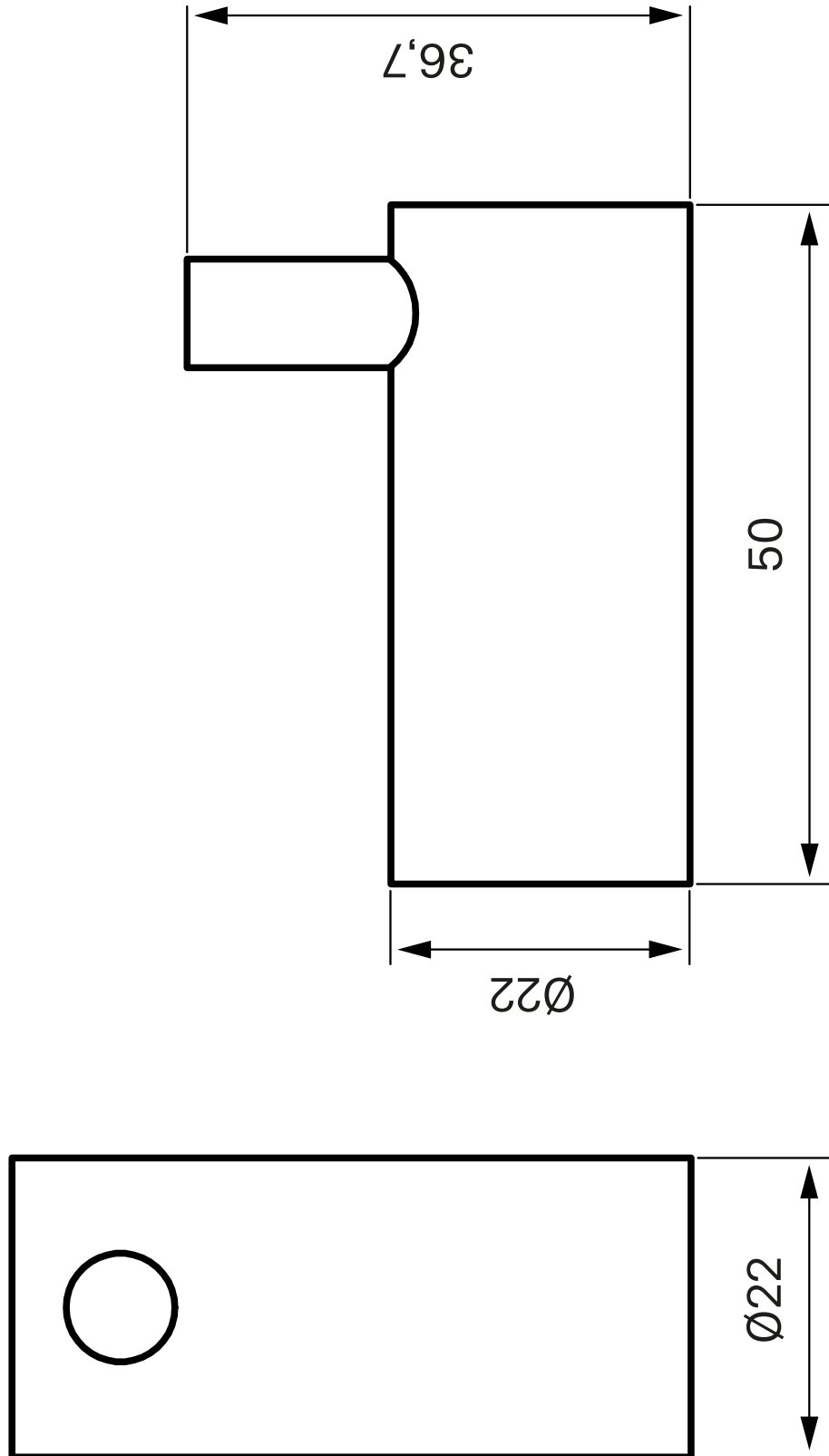
Product - Width - 22 mm

Product - Depth - 50 mm

Product - Height - 36 mm

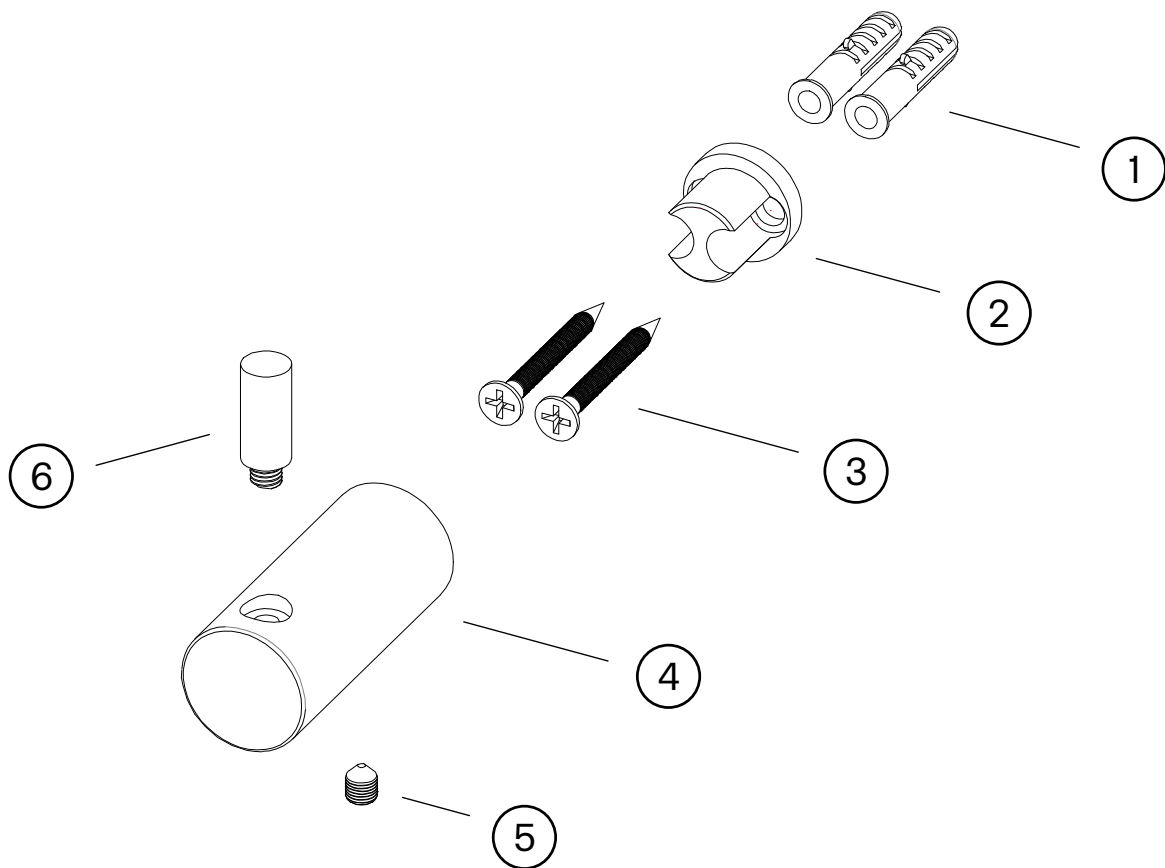
Tapwell

Drawing - PDF



Tapwell

Exploded View



1. Screw plug $\text{\O}6 \times 30 \text{ mm}$
2. Screw attachment $\text{\O}19 \times 16,5 \text{ mm}$
3. Screw $\text{M4} \times 35 \text{ mm}$
4. Hook $\text{\O}15 \times 30 \text{ mm}$
5. Allan screw $\text{M5} \times 6 \text{ mm}$
6. Knob $\text{\O}8 \times 21,4 \text{ mm}$