

# Tapwell

## TA234 Accessory

---

TA234 Chrome

---

### Article Number

TA234 Chrome - 9419185  
TA234 Matte Black - 9420340  
TA234 Polished Brass - 9419186  
TA234 Copper - 9420086  
TA234 Bronze - 9426172  
TA234 Black Chrome - 9419191  
TA234 Honey Gold - 9419190  
TA234 Brushed Black Chrome - 9422824  
TA234 Brushed Nickel - 9420933  
TA234 Ascot Grey - 9422825

---

Spare toilet paper holder.



# Tapwell

---

## **Cleaning**

Wipe the surface with a soft cloth and lukewarm water and possibly with soap solution. Avoid alkaline, acid-liming or abrasive cleaners.

Brass is a material that over time gets a beautiful patina but can be polished with brass polish. Copper also gets patina but should not be polished. The other shiny surfaces retain their luster.

## **Decalcification**

Aerators and shower handles should be regularly decalcified by placing them in a vinegar bath for a couple of hours. Should limescale stains occur, use eucalyptus oil and a soft cloth.

## **Lubrication**

Lubricate only with silicone grease.

## **Maintenance**

Visit our [YouTube channel](#) → where there are instructional videos for changing the ceramic cartridge, changing aerators and more.

---

## **Dimensions/Weight**

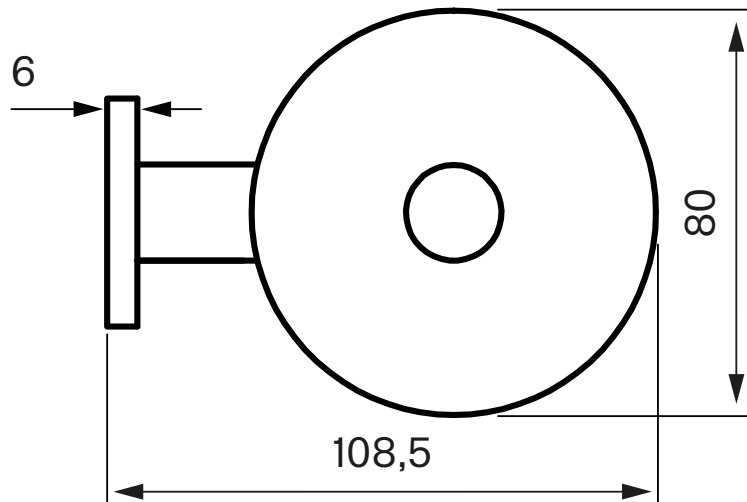
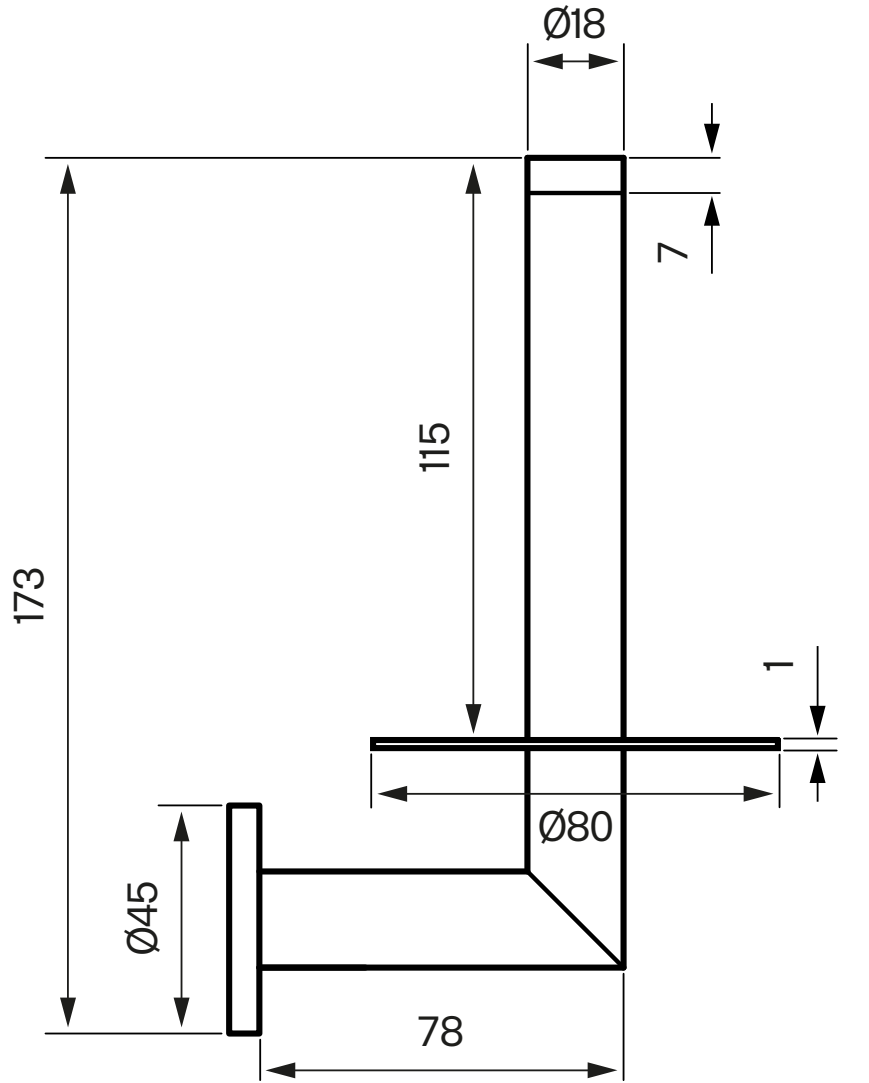
**Product - Width:** 80 mm

**Product - Depth:** 118 mm

**Product - Height:** 173 mm

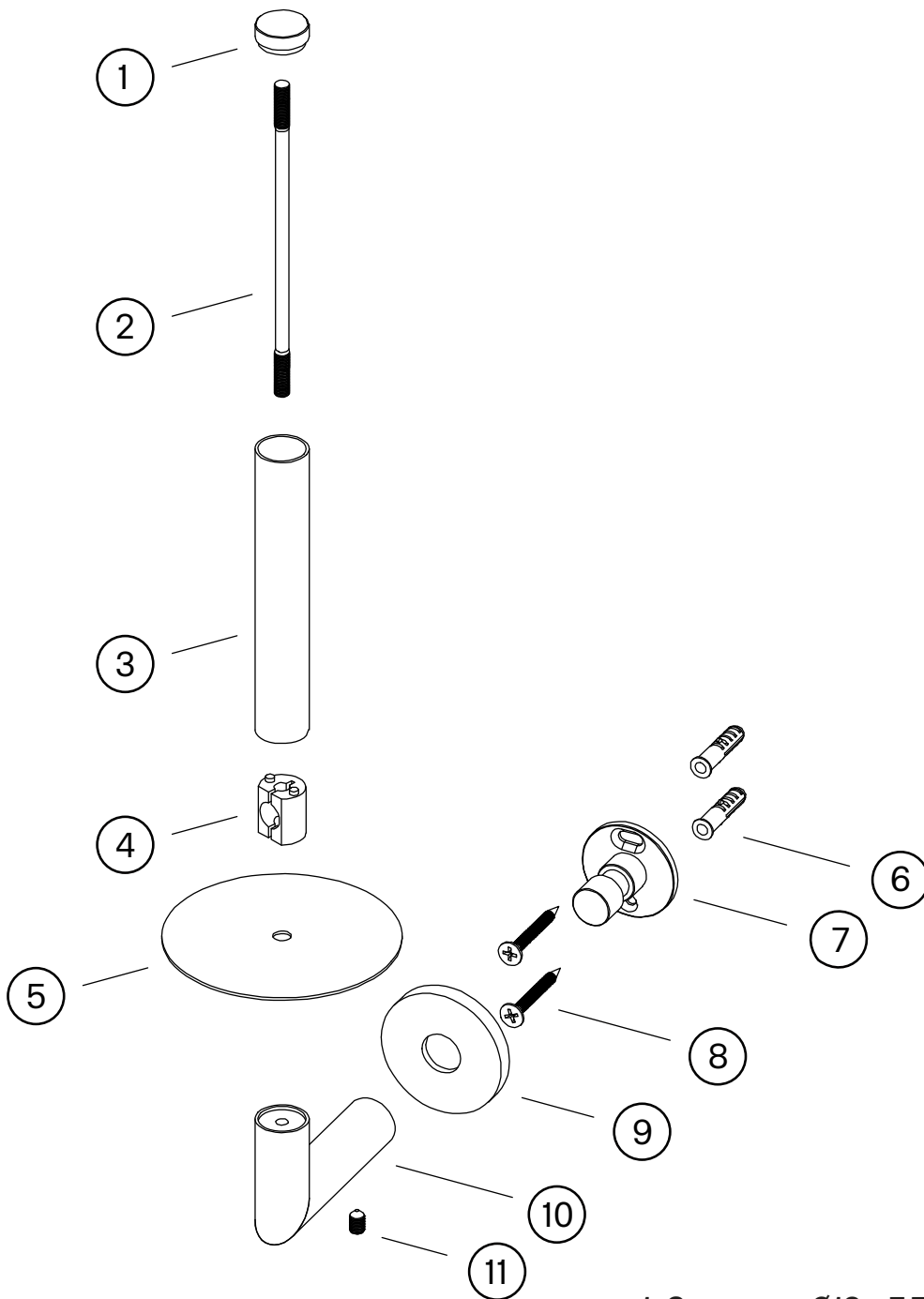
# Tapwell

Drawing - PDF



# Tapwell

## Exploded View



1. Cover cap  $\text{Ø}18 \times 7,5 \text{ mm}$
2. Inner bar M5 x 122 mm
3. Outer pipe Ytterrör  $\text{Ø}18 \times 1 \times 109 \text{ mm}$
4. Nippel 15,9 x 13,5 x 19 mm
5. Bricka  $\text{Ø}80 \times \text{Ø}5,2 \times 1 \text{ mm}$
6. Screw plug  $\text{Ø}6 \times 30 \text{ mm}$
7. Wall mount  $\text{Ø}34,6 \times 29,5 \text{ mm}$
8. Screw M4 x 35 mm
9. Wall plate  $\text{Ø}45 \times 6 \text{ mm}$
10. Angled pipe 72.5 x 44 x 18 mm
11. Allan screw M5 x 8 mm