

EVM026-150 Bath Tap

EVM026 Chrome

Article Number

EVM026 Chrome - 9418730
EVM026 Matte Black - 9420360
EVM026 Polished Brass - 9418675
EVM026 Copper - 9418888
EVM026 Bronze - 9425935
EVM026 Black Chrome - 9419331
EVM026 Honey Gold - 9419332
EVM026 Brushed Black Chrome - 9423065
EVM026 Brushed Nickel - 9421389

Pressure balanced thermostatic bath- and shower Tap including hand shower, flexible hose and metal bracket.



Tapwell

Cleaning

Wipe the surface with a soft cloth and lukewarm water and possibly with soap solution. Avoid alkaline, acid-liming or abrasive cleaners.

Brass is a material that over time gets a beautiful patina but can be polished with brass polish. Copper also gets patina but should not be polished. The other shiny surfaces retain their luster.

Decalcification

Aerators and shower handles should be regularly decalcified by placing them in a vinegar bath for a couple of hours. Should limescale stains occur, use eucalyptus oil and a soft cloth.

Lubrication

Lubricate only with silicone grease.

Maintenance

Visit our [YouTube channel](#) → where there are instructional videos for changing the ceramic cartridge, changing aerators and more.

Specifications

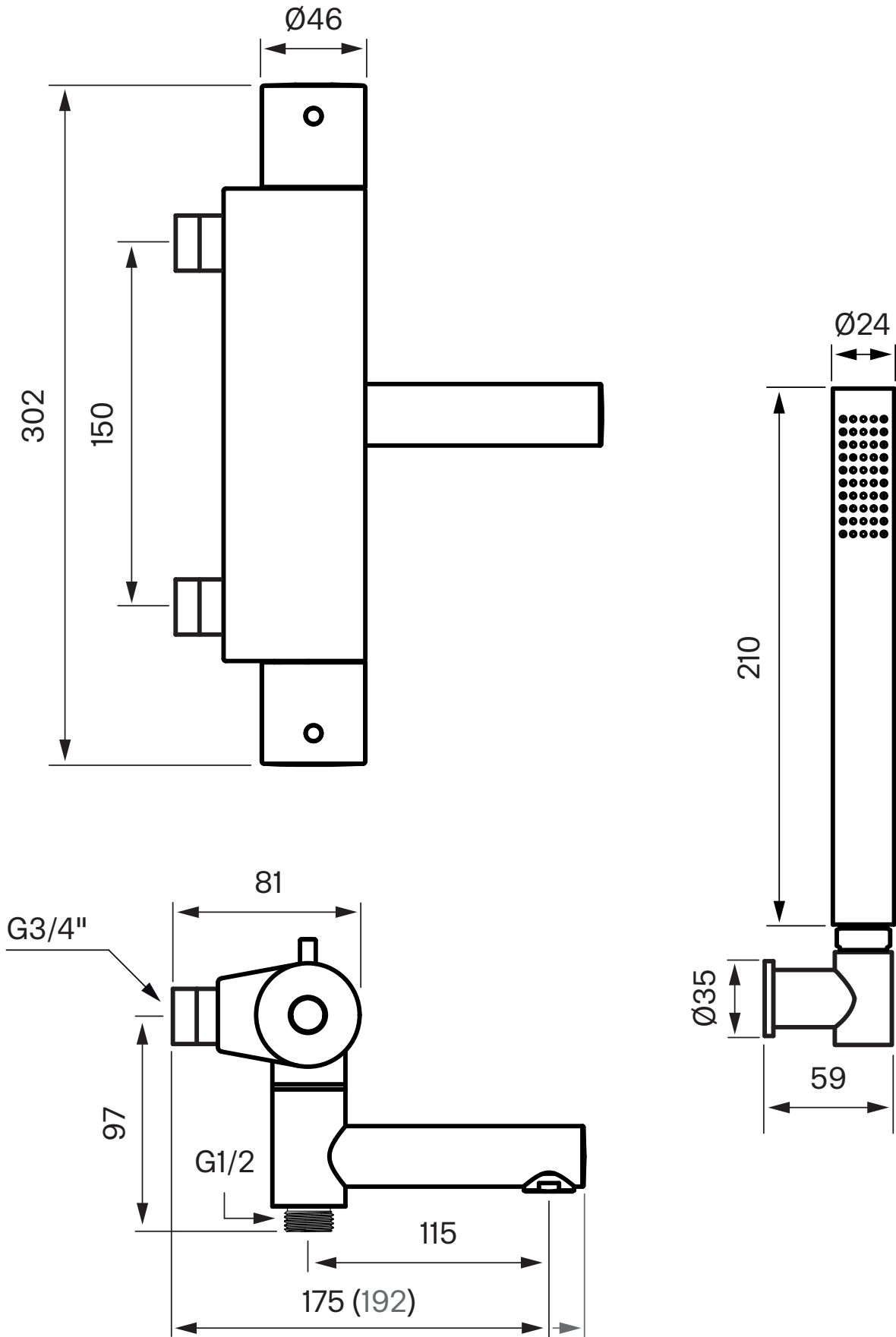
Connection inlet: Internal thread
Number of grips: One grip
Number of outgoing connections: 1
Dimension inlet: 3/4 tum
Dimension outlet: 1/2 inch
Built in: No
Lift valve: No
Length protrusion outlet head: 115 mm
Machine shutdown: No
Turnable head: Yes

Dimensions/Weight

Package - Depth: 370 mm
Package - Width: 260 mm
Package - Height: 150 mm
Package - Weight: 4,00 kg
Package - Volume: 0,01 m³
Building height underneath outlet: 115 mm
Product - Width: 302 mm
Product - Depth: 192 mm

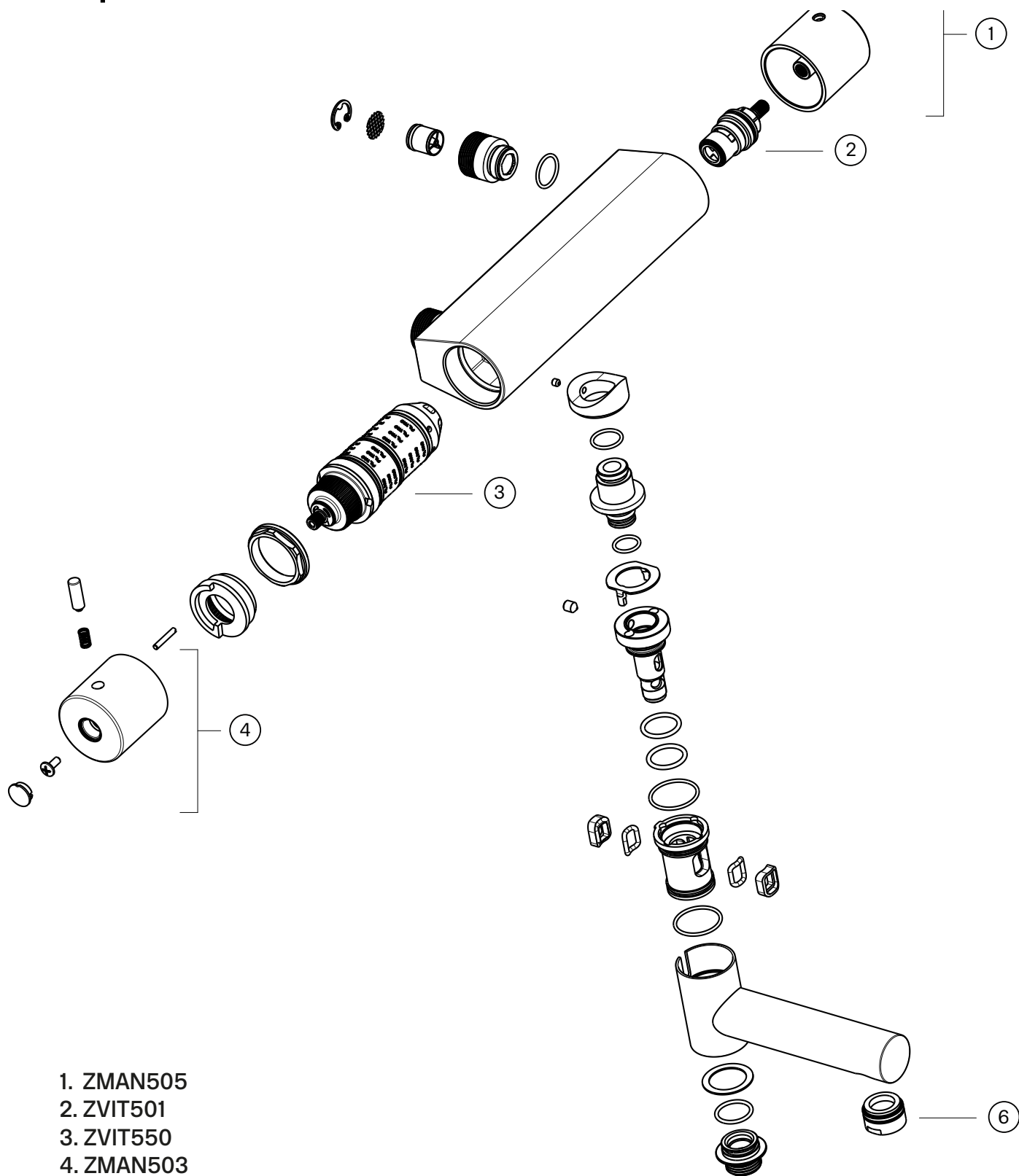
Tapwell

Drawing - PDF



Tapwell

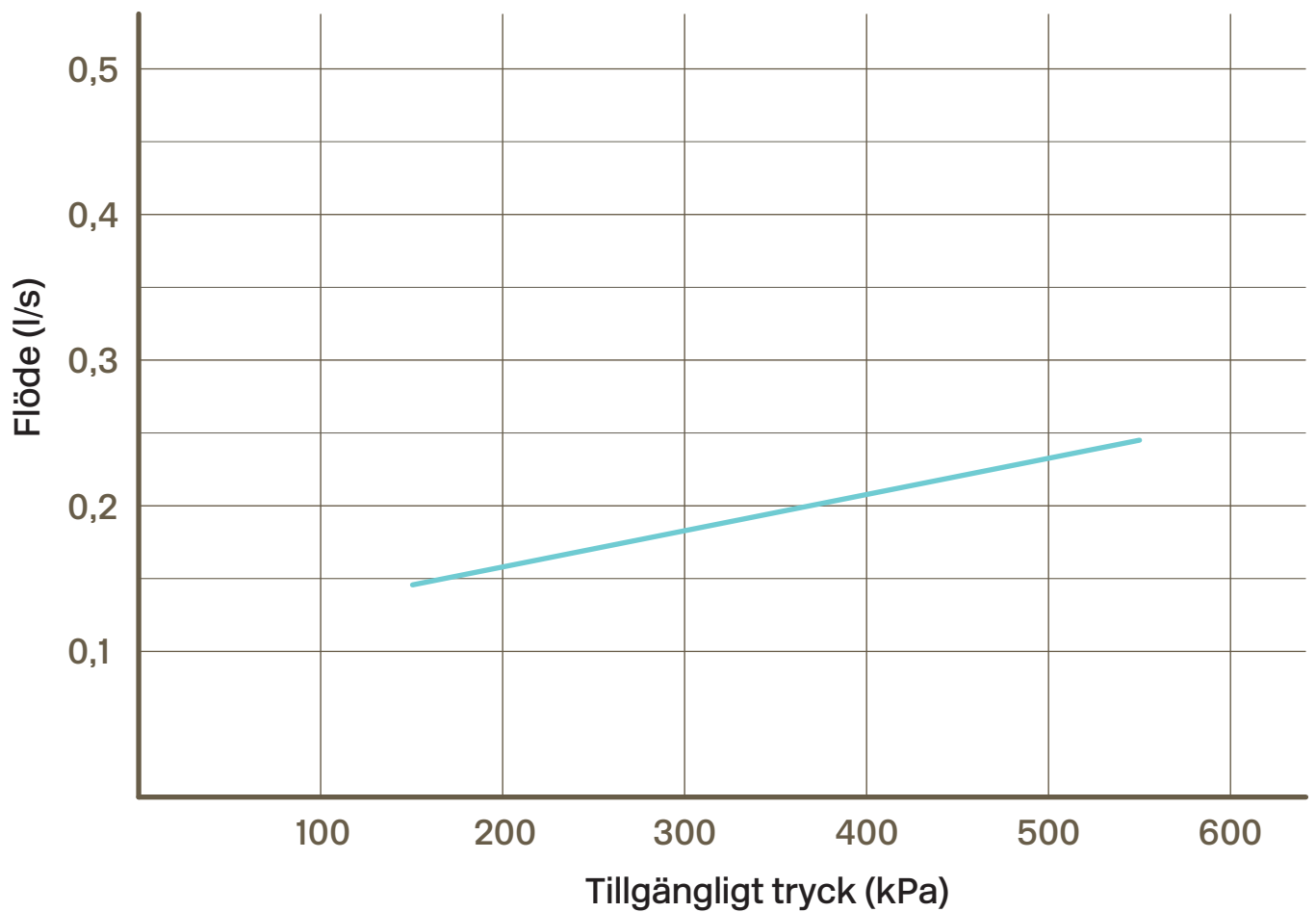
Exploded View



- 1. ZMAN505
- 2. ZVIT501
- 3. ZVIT550
- 4. ZMAN503

Tapwell

Flowcart



— = Blandad temperatur

EVM 022

Dusch- och badkarsblandare med termostat